



SpeedCheck®



CCR Data Systems, Inc.

March, 2010

NEW

SpeedCheck Desktop Online Ordering

SpeedCheck Desktop Online Ordering can have a dramatic impact on the food service experience by saving time and increasing revenue.

START > 1 > 2 > 3 > 4 > 5 > COMPLETE

SpeedCheck, Inc.
Online Ordering

Children's Hospital Boston
The Hospital for Children

Children's Hospital Online Ordering

Food Service Contact Food Service Contact: 10 Cafe 01 Call 1-888-555-1212	Hours of Operation Monday 03/22/10 Open: 08:00 AM - 10:30 AM Close: 11:30 AM - 05:00 PM	Special Notes Special Notes for Cafe 01 Closed for holidays	Location of Food Pickup <input type="radio"/> Bob's Yogurt Shop <input type="radio"/> Gene's House of Pizza <input type="radio"/> Doug's Chicken Shack
Last Name: _____ Password: _____ Guest: <input type="checkbox"/>	Last Processed Transaction Date: _____ Time: _____ Order Number: _____ Amount: _____	Location Details Front of building Jerry's old office	

Instructions for Employees:
Please enter your last name and password. Then click on the Sign In button. New users will be prompted to confirm the password.

Instructions for Guests:
Please enter your last name and click on the Guest box. Then click on the Sign In button.

Copyright 1995-2010 CCR Data Systems, Inc. Version 1.0.00

✓ Time Saved - Allowing employees to order meals from their desk PCs *saves time*. For example let's say employees walk 10-15 minutes to the cafe. Then they order a deli sandwich with condiments choices. This may take another 5-10 minutes. Finally they stand in the checkout line for another 5 minutes. With an hour off, *half* the lunch break is gone before sitting down to eat! Valuable time is saved by *skipping* food ordering and checkout lines. Also online ordering *boosts efficiency* as it decreases the time your crew spends taking orders. Next it *eliminates miscommunication* as your customer controls the order entry process. Finally anyway to shorten the lines at a busy cafeteria during lunch will improve the cafeteria experience for everyone.

With SpeedCheck Desktop Online Ordering, customers can place orders during the morning coffee break, the previous day, week or just before lunch. The first time a user makes an online order, they will be prompted to *sign up* and create a unique and secure password.

✓ Deli Sandwich Ordering: When ordering deli sandwiches, options are available for multiple ingredients, condiments, veggies and cheese. Options can be included at no additional charge or at an extra charge if desired.

Special order instructions can also be given by the customer.



Next, customers select the day and time to pick up the order. If the customer wants the food right away, a minimum preparation time is shown. Finally they can prepay the order with *CASHLESS* payments as well, such as payroll deductions, declining balance and department charges. If they want to use a credit card, the customer pays for the order at the online ordering station at the food pickup area.

✓ Revenue Growth - Allowing customers to pre-order meals should provide *additional food sales*. The average sale is projected to be larger as well. Allowing customers to place advance orders 24/7 without paying an order taker effectively gives you a 24/7 operation. Online orders created without food staff, provides a potential labor savings. We post daily specials on the initial screen to promote sales. Also SpeedCheck online ordering provide customers easy and increased access to your menus and specials, providing a competitive edge over other food

START > 1 > 2 > 3 > 4 > 5 > COMPLETE

Today's Specials

Order	CHICKEN PHILLY SANDWICH	2.64
Order	HERB COO	2.64
Order	HEATLOAF	2.00

Customer Information

Last Name: Lamphere
 First Name: Ragh
 Guest: No
 Pickup Location: Doug's Chicken Shack
 Rear of building
 left after entry

Order Summary

Change	Quantity	Description	Extended Price
	1	CHEF'S SALAD	2.40
Change	1	CAPPUCCINO - MEDIUM	1.04
Change	1	Brownie	1.27

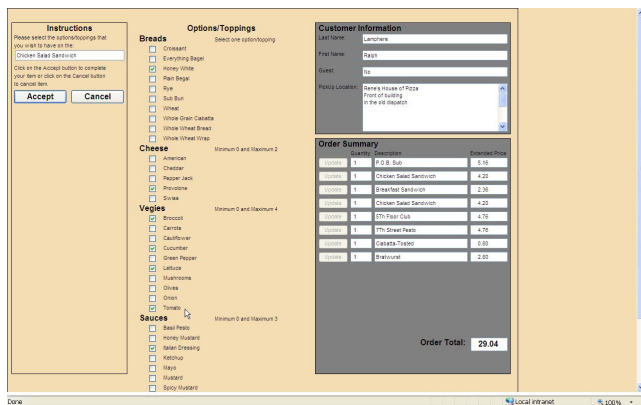
Order Total: 4.71

Checkout View Order Detail Cancel Order

service outlets or restaurants in the area. Beside employees ordering individual meals, administrative staff can use the same module to schedule [catering](#) or [event planning](#).

✓ Online Ordering Manager's Module - To process online orders, food orders are sent to a [network food preparation printer](#). At larger sites, hot, cold and final assembly printers can be used. Being aware of patron's orders in advance brings efficiency to the food preparation process.

✓ Secure Online Ordering Solution - The SpeedCheck online ordering solution is uniquely designed for healthcare and corporate cafeterias. Typical online ordering solutions are web based. This means employees would need to access the internet to order and pay for food. Our solution would provide an intranet based solution, so [outside internet access is NOT needed](#). This improves security for your IT department and if IT approves it, then online ordering will be implemented faster. Secondly most web ordering products require payment by credit card only or payment at pickup. Our SpeedCheck Online Ordering will allow many other [CASHLESS](#) payments. Finally IT will be glad to know that we will not load any applications on individual desktop PCs, simplifying installation and support for everyone.



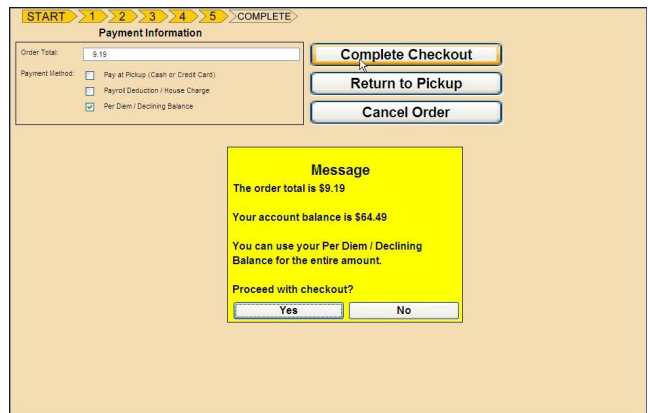
✓ Summary - In today's competitive and demanding food service environment, CCR's Speed-Check Desktop Online Ordering can be a successful addition to your operation with greater customer satisfaction and involvement. For employees that do not have a PC desktop, CCR can provide a [wall-mounted, touch Kiosk](#).



SpeedCheck Desktop Online Ordering (available in FMS version 9.4 and SpeedCheck 5.1), is an essential program for healthcare and corporate cafeterias to maximize revenue and provide the best customer purchasing options.

✓ CCR - The Complete Solution

SpeedCheck online ordering works with your existing cafeteria POS systems. If needed, CCR offers a complete solution for your cafeteria with touch screen POS registers designed for high volume healthcare sites including [CASHLESS](#) features, payroll deduction, declining balance, resident stipend, volunteer stipend, cost center, department charges and secure credit card processing. We support single and multiple cafeteria campuses, gift shops, self-ordering kiosks, and wireless tablets for floor stock & guest ordering.



For information call:

CCR Data Systems, Inc.
128 Airport Road, Concord, NH 03301
Tel (603)-224-7757 Fax (603)-224-7709
Toll Free (800)-633-6500
www.ccrdata.com

